

**MODEL:** iR 1210/1230/1270F

**SUBJECT:** Introduction of soon to be launched new model

**Detail:**

<Overview>

The iR1200 Series range of machines are soon to be launched within the UK and are based on the PC1200D range of SmartBase devices currently being marketed through the CCI Channel.

The purpose of this ATI is to cover the main differences between the current models and the new products. Service Training will begin in November 2002 and will be a 1-day course. Technicians originally trained on the SmartBase PC1200D range will not require any further training. Parts fiche are currently available (FY8-31FX-F000). The CD ROM will be available soon, containing Parts Catalogue, Service Manual and other relevant technical documentation .  
(P/N°. CD-iR1200-00Z)

The iR1200 Series comes in three options. (Note it is not possible to upgrade a less featured device to a higher featured device)

<b>iR1210</b>	<b>COPY + PRINT</b>
<b>iR1230</b>	<b>COPY + PRINT + ADF</b>
<b>iR1270F</b>	<b>COPY + PRINT + FAX + ADF</b>



Printing is via parallel or USB (1.1). Network / Workgroup printing (option) can be achieved with the addition of an Axis 1610 print server.

PLEASE REFER TO PAGES 6 & 7 FOR INFORMATION RELATING TO THE AXIS 1610 PRINTER SERVER...

The iR1200 Series differs from the SmartBase PC1210D/PC1230D/PC1270D (designed for installation by the user) in that the SmartBase PC1210D/PC1230D/PC1270D cartridge has been turned into a drum unit and a toner bottle, with the rest (including settings) being the same. The installation procedure is mentioned on the service manual and is also packed with a main unit. The machine's drum is constructed as a collection of units, enabling the user to replenish toner by replacing the toner cartridge. The drum unit prints about 200 pages after the waste toner casing has been identified as being full (although varies depending on copy/print ratio and other parameters). The toner bottle is good for about 80 pages after detection of a toner low condition (6% original; varies depending on copy/print ratio and other conditions).

Drum Mercury Product Code : 7815A003AA (24k copies A4 @ 6% coverage)  
C-EXV Toner Mercury Code : 7814A002AA (5.3k copies A4 @ 6% coverage)

## <Use of a Software-Based Counter>

The machine is equipped with a software-based counter as part of its charge function. (The counter is limited to the total output counter.) The Counter Confirmation screen is designed to indicate the machine's serial number (3 alphabet characters + 5-digit number) so that the user can readily identify the machine.

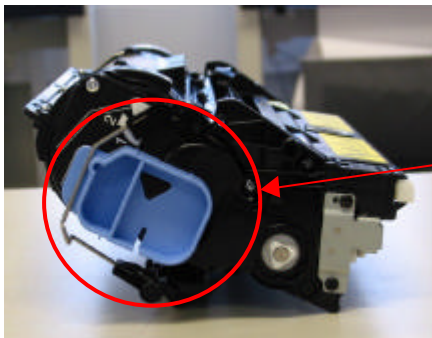
The iR1210/1230/1270F is equipped with 16MB RAM for image memory.

The iR1270F is equipped with a fax function. The max transmission speed is 33.6Kbps with automatic fall back function.

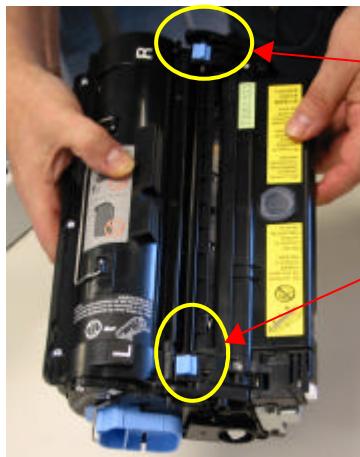
For further detailed information relating to the iR1210/1230/1270F, please refer to Service Manual (FY8-13HU-00L) or CDROM (CD-iR1200-00Z)

## <Points To Note>

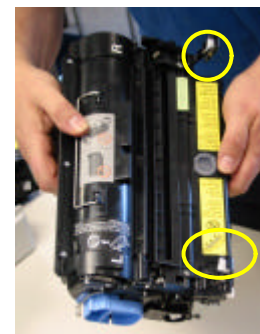
### DRUM UNIT

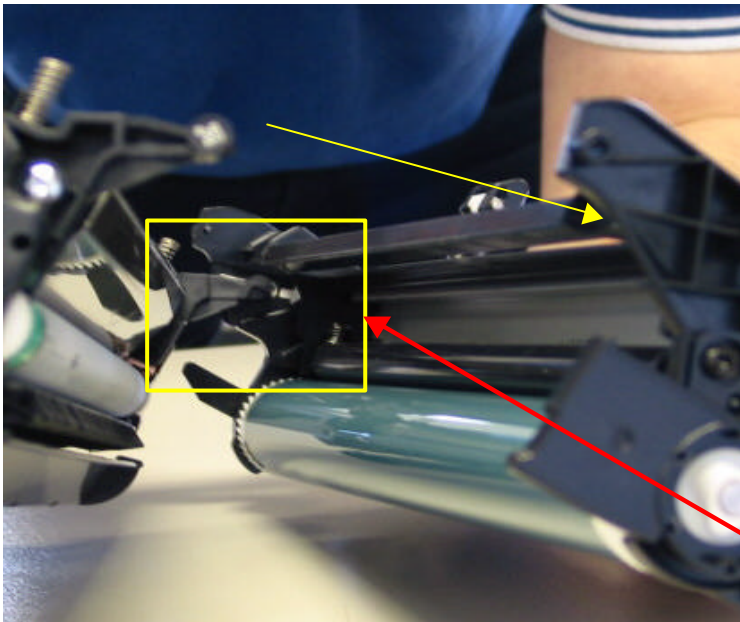


Before removing the drum assembly, away from the dev. assembly. It is important that the drum tool is fitted as shown. This locks back the shutter away from the OPC surface of the drum to prevent any damage to its surface.

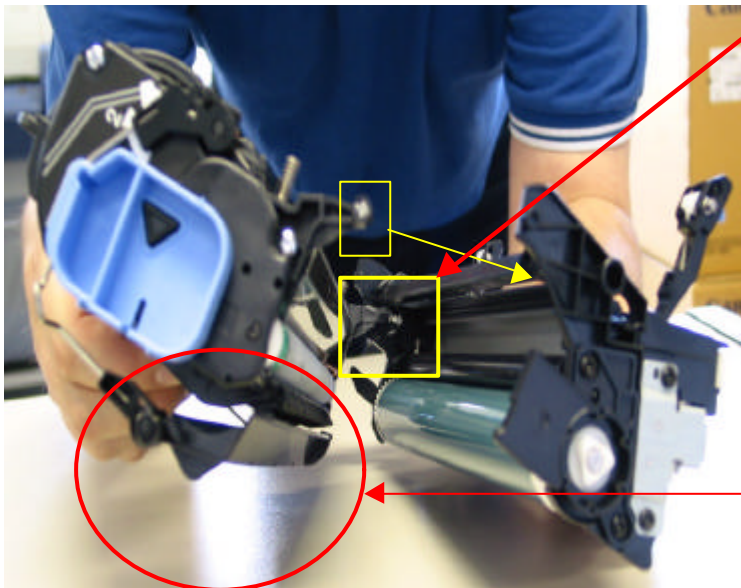


Once the tool has been fitted the drum can then be separated from the developer assembly. The two tabs highlighted in the diagram need to be released so that they are in the position shown below.



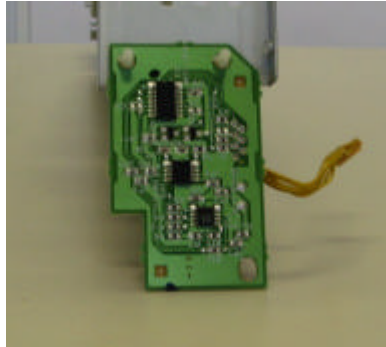


**Re-Assembly**  
When re-installing the drum to the developer unit, it is important that these areas are engaged correctly on both sides.



**NOTE**  
The diagram shows the position of the shutter whilst the drum tool is fitted

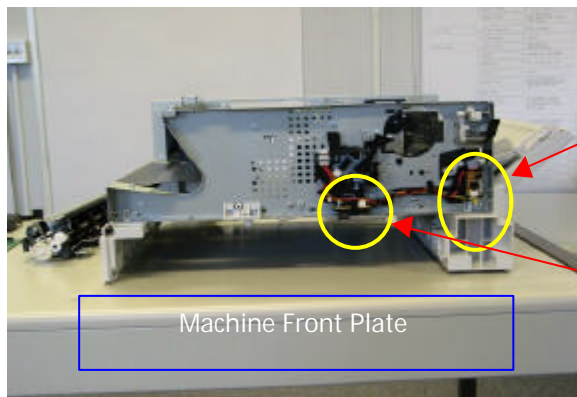
Additional PCB's



The iR1200 series is also fitted with a serial number PCB that is located on the side frame of the machine at the rear.



In addition to the serial number PCB the machine is also fitted with a counter memory PCB mounted onto the IP. If the IP is replaced be sure to swap the memory counter over to the new IP



Machine Front Plate

Humidity Sensor PCB assembly

Sensor Connect PCB assembly

<Major Parts Compatibility>

Component	iR1200 SERIES	PC1200D SERIES
Counter Memory PCB	Unique part	(N/A)
Serial Number PCB	Unique part	(N/A)
Developer Assy	Unique part	(N/A)
Drum Assy	Unique part	(N/A)
Print Board	Not interchangeable	Not interchangeable
DC Controller	Not interchangeable	Not interchangeable
DC PSU	Interchangeable	Interchangeable
IP Assy	Not interchangeable	Not interchangeable
Fixing Assy	Interchangeable	Interchangeable
Laser Assy	Interchangeable	Interchangeable
Registration Assy	Interchangeable	Interchangeable
Main Drive Assy	Interchangeable	Interchangeable
ADF Drive Assy	Interchangeable	Interchangeable
Humidity Sensor	Unique part	(N/A)
Waste Toner Detection	Unique part	(N/A)
Reader Drive Assy	Interchangeable	Interchangeable

**FEATURES**

Axis 1610 Network adapter

Print server	<ul style="list-style-type: none"> <li>• Providing high performance and reliability combined with low power consumption. The electronic circuits are based on the improved AXIS ETRAX 100 chip, which comprises an integrated 32-bit RISC processor and associated network controllers.</li> </ul>	<ul style="list-style-type: none"> <li>• Reliability</li> </ul>
AXIS ETRAX 100 chip	<ul style="list-style-type: none"> <li>• Specifically designed for LAN products and benefits users with a faster throughput than a direct PC-to-printer connection. With a sustained data throughput of 800 kbytes per second (100base TX) and 600 kbytes per second (10baseT), the AXIS 1610 is fast. ECP high-speed Centronics communication is supported.</li> </ul>	<ul style="list-style-type: none"> <li>• Speed</li> </ul>
Installation software	<ul style="list-style-type: none"> <li>• The AXIS 1610 is to be installed within 10 minutes, using the provided software utilities.</li> </ul>	<ul style="list-style-type: none"> <li>• Easy-to-install</li> </ul>
Password	<ul style="list-style-type: none"> <li>• You can assign a password that restricts unauthorised configuration of the AXIS 1610.</li> </ul>	<ul style="list-style-type: none"> <li>• Security</li> </ul>
NetPilot Software	<ul style="list-style-type: none"> <li>• The provided AXIS Netpilot software and the internal AXIS 1610 Web pages allow you to continuously monitor printer status.</li> </ul>	<ul style="list-style-type: none"> <li>• Monitoring</li> </ul>
Flash memory	<ul style="list-style-type: none"> <li>• You can upgrade the AXIS 1610 Flash memory over the network. This allows you to quickly update and enhance the operational features of your AXIS 1610 when new print server software becomes available.</li> </ul>	<ul style="list-style-type: none"> <li>• Future proof</li> </ul>
Parallel port	<ul style="list-style-type: none"> <li>• The AXIS 1610 is equipped with one high-speed parallel port connector that plugs directly into the printer's parallel port.</li> </ul>	<ul style="list-style-type: none"> <li>• Pocket-sized</li> </ul>

For detailed information on how to install etc. please refer to the Axis 1610 User Manual.

## MAIN TECHNICAL SPECIFICATIONS

Spec.	Explanation
<b>Supported systems</b> Microsoft Windows: WWW:	Windows 95/98, ME, NT 4.0, 2000 and XP Netscape Navigator 3.0 and above and MS Internet Explorer 3.0 and above
<b>Printing Protocols</b> Windows:	TCP/IP, NetBIOS/NetBEUI
<b>Management Protocols</b> NetWare: Windows: TCP/IP:	IPX NetBIOS/NetBEUI or TCP/IP, WINS FTP, BOOTP, ARP, RARP, DHCP ICMP, IGMP, IP, TCP, UDP, HTTP, SNMP, TFTP
Network Management	SNMP-MIB II compliant (over UDP/IP, private enterprise MIB, Host Resources MIB, Printer
Hardware	32 bit 100 MHz RISC Controller, 1 Mbyte Flash memory 2 Mbytes DRAM
Logical Connection	Running simultaneously and combination of the supported protocols. Use of IEEE802.2, IEEE802.3, SNAP and Ethernet II frame types simultaneously.
Attachments	RJ-45 connector (Category 5 Unshielded Twisted Pair) for 10base Ethernet and 100baseTX Fast Ethernet
Security	A Root password protects the configuration settings.
Parallel Printer	One IEEE 1284 compliant high-speed parallel port, 36-pin Centronics connector. Sustained throughput of 800 kbytes/s (100base TX) and 600 kBytes/s (10baseT). ECP support
Front Panel	2 LED indicators: Power and Network Test button
<b>Power Consumption</b> External power supply:	Maximum 200mA at 12 VDC. (Type PS-B, 12V, 500mA)
<b>Dimensions</b> Height x W x D	0.9 x 2.4 x 4.8 inches (2.4 x 6.1 x 12.1 cm)
Weight	0.22lb. (0.1 kg)
<b>Environmental</b> Temperature: Humidity:	40 - 105° F (5 - 40° C) 10 - 95% not-condensing
<b>Approvals</b> EMC: Safety:	EN 55022/1994, EN50082-1/1992. FCC Class A CE-mark. EN 60950.